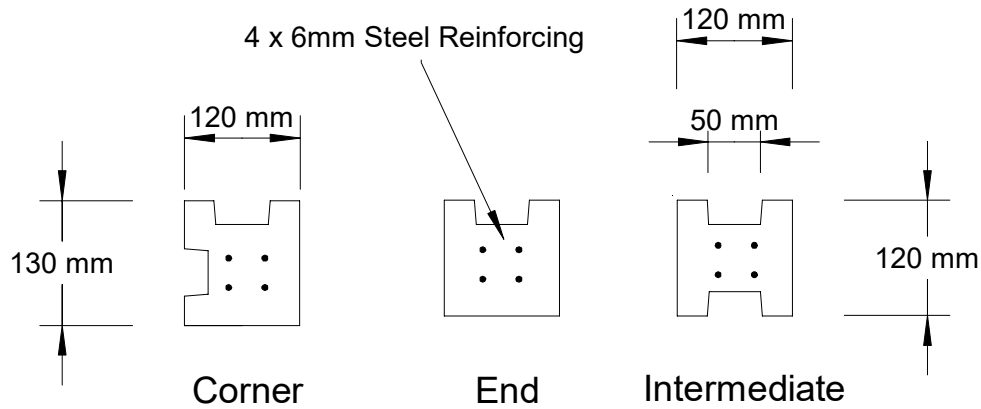


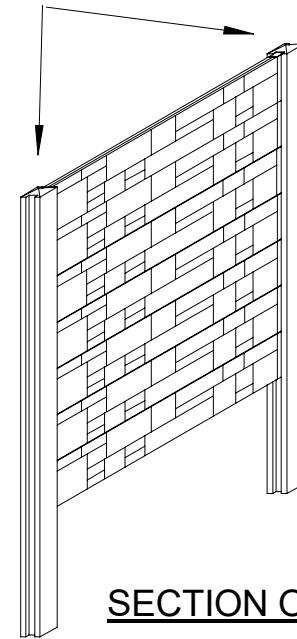


# ROCKRETE PRECAST SYSTEMS LTD



CROSS SECTION OF POSTS

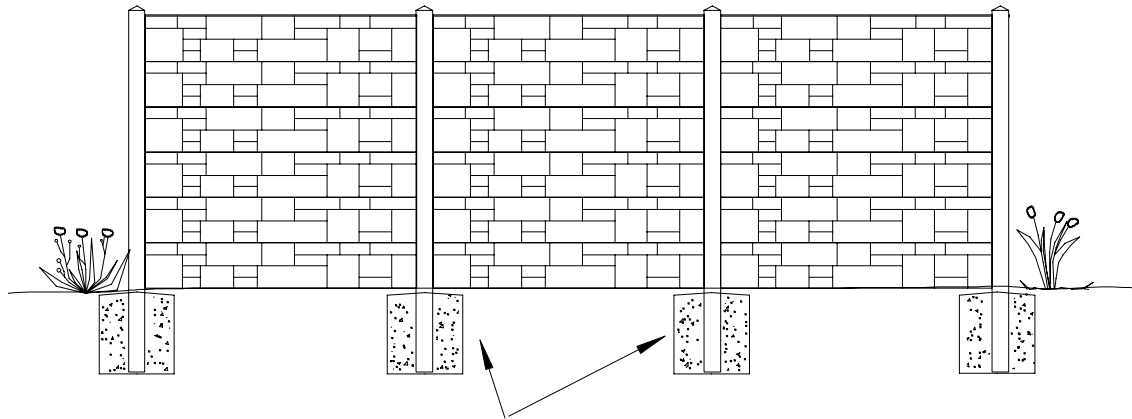
Cast in Pyramid Tops  
(no protruding steel reinforcement)



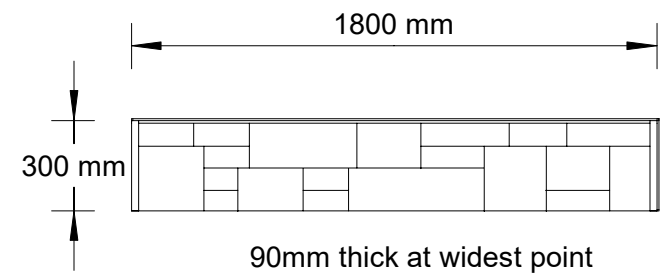
SECTION OF WALL

- Wall Heights  
(above ground level)
- 2.1 metres
  - 1.8 metres
  - 1.5 metres
  - 1.2 metres

FRONT VIEW OF WALL



15 MPa Concrete Footing  
600mm x 600mm  
(size dependent on ground conditions)



WALL PANEL  
DOUBLED SIDED ROCKFACE FINISH

PRECAST WALL (ROCKFACE FINISH)

2019-01-07

DJN